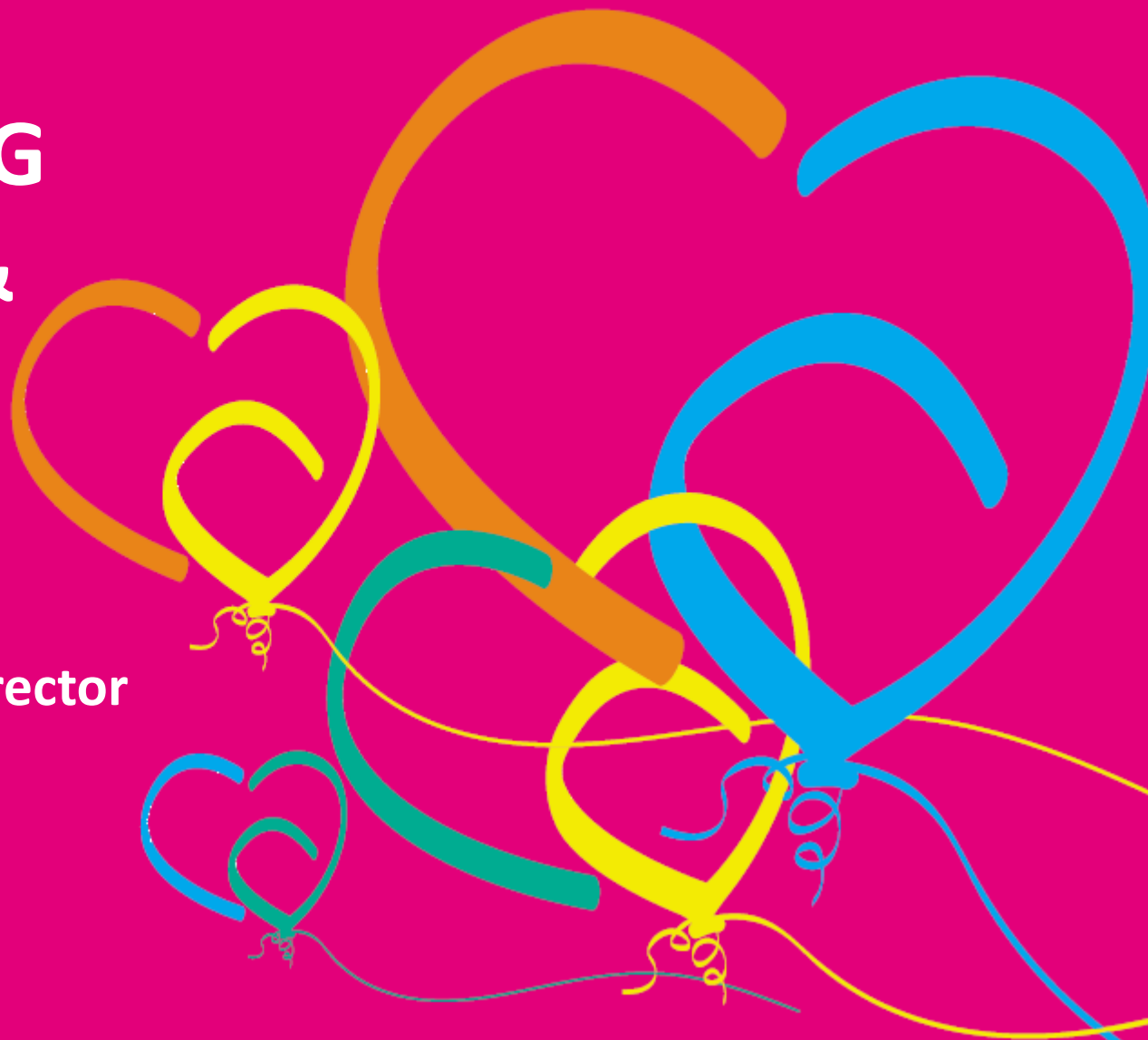




UP & RUNNING TWO WEEKS & COUNTING

Presented by
Sharifa Ali-Abdullah, Director



Key Functions of the Authority



Hotline 996

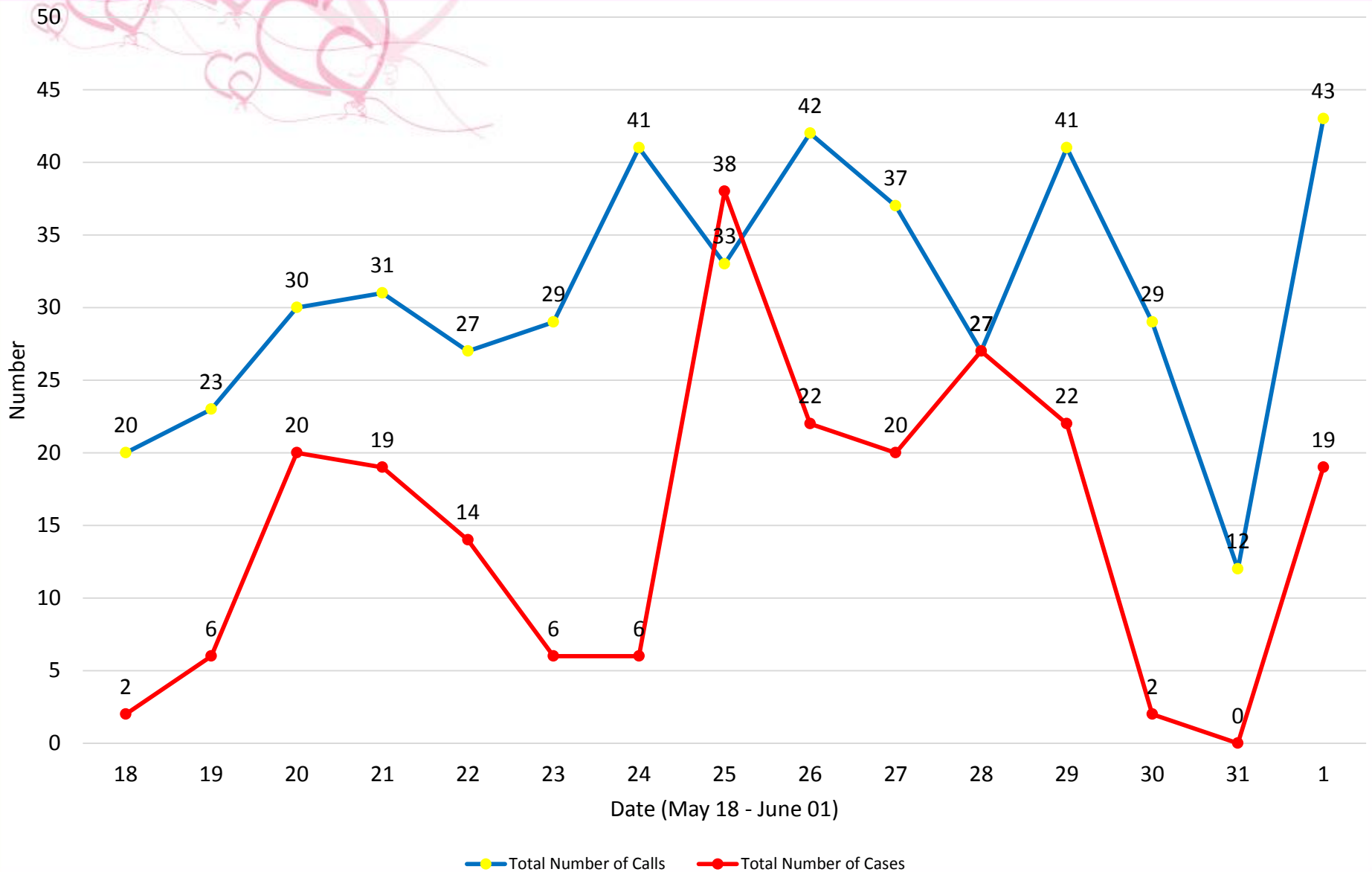


453 calls

222 cases



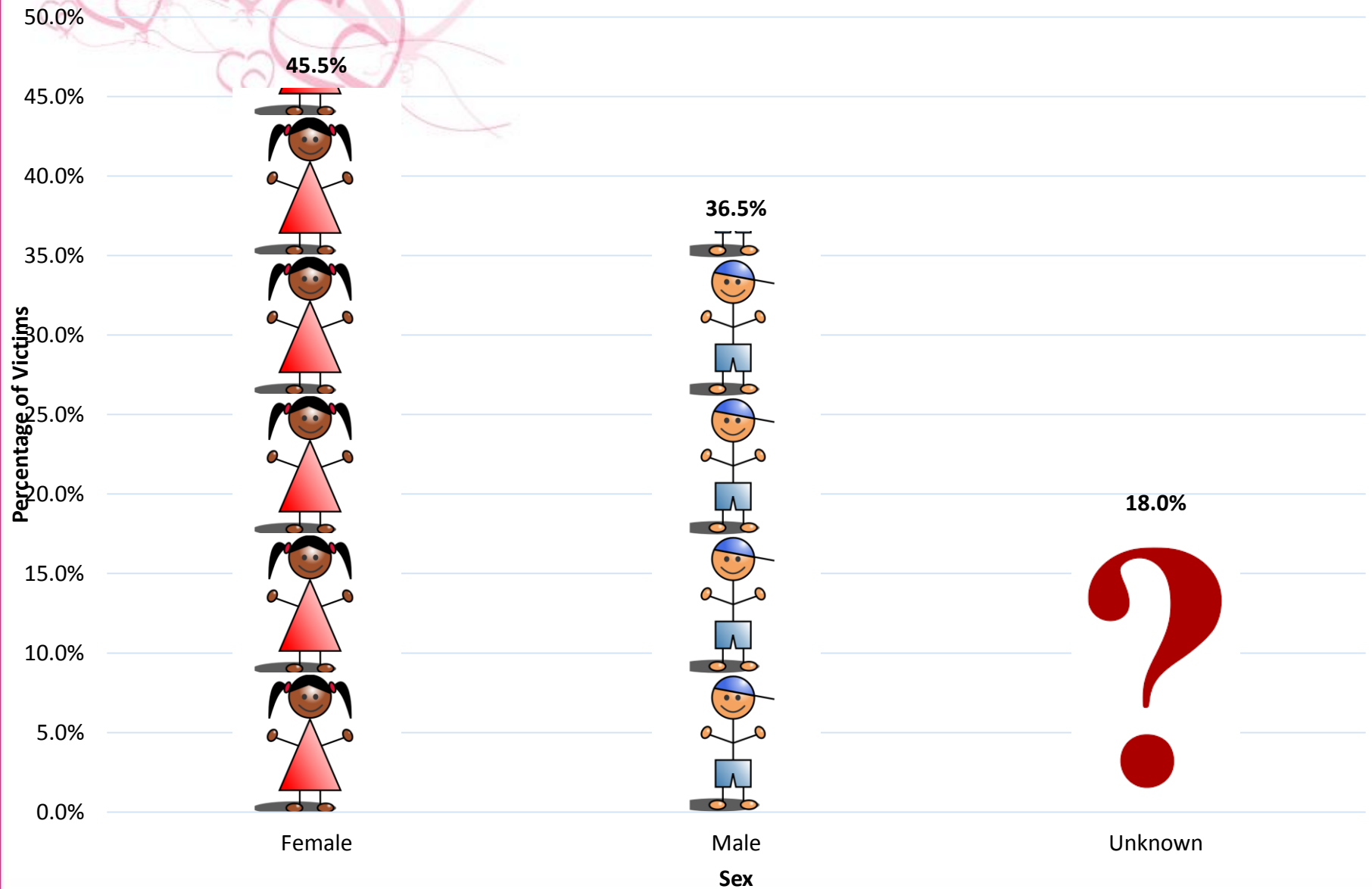
Number of Calls and Cases Received by the Authority



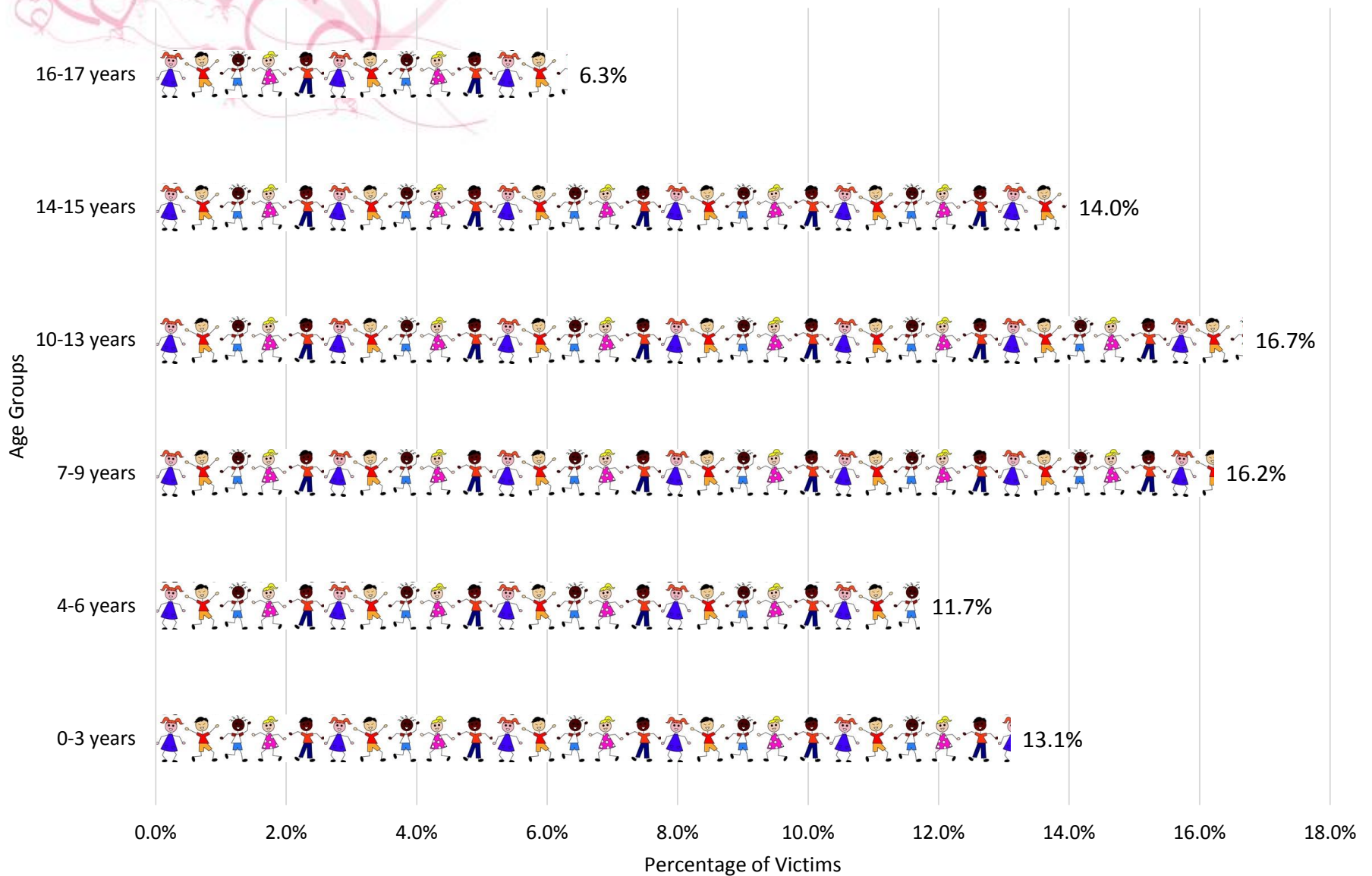
Levels of Risk



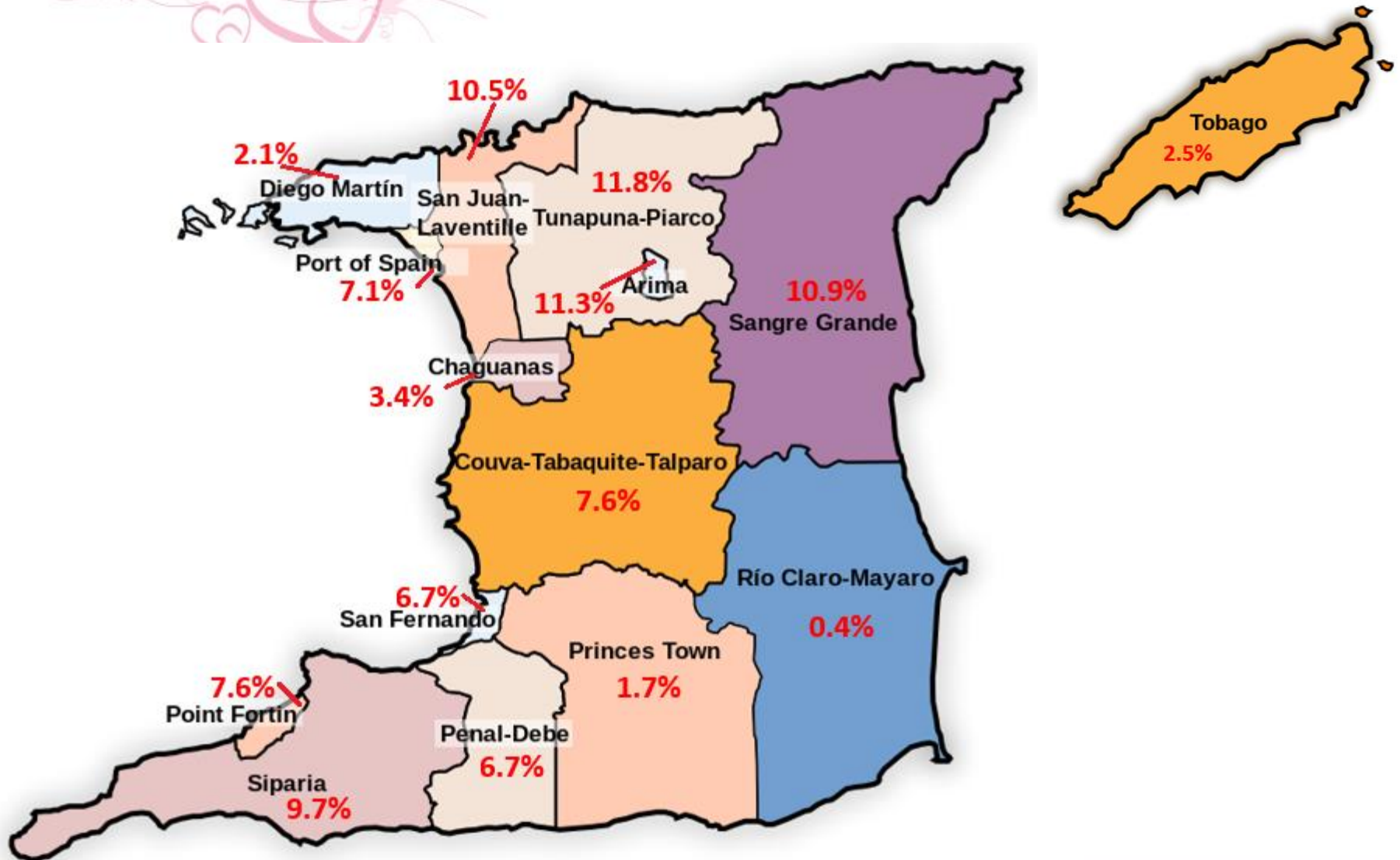
Sex of Victims



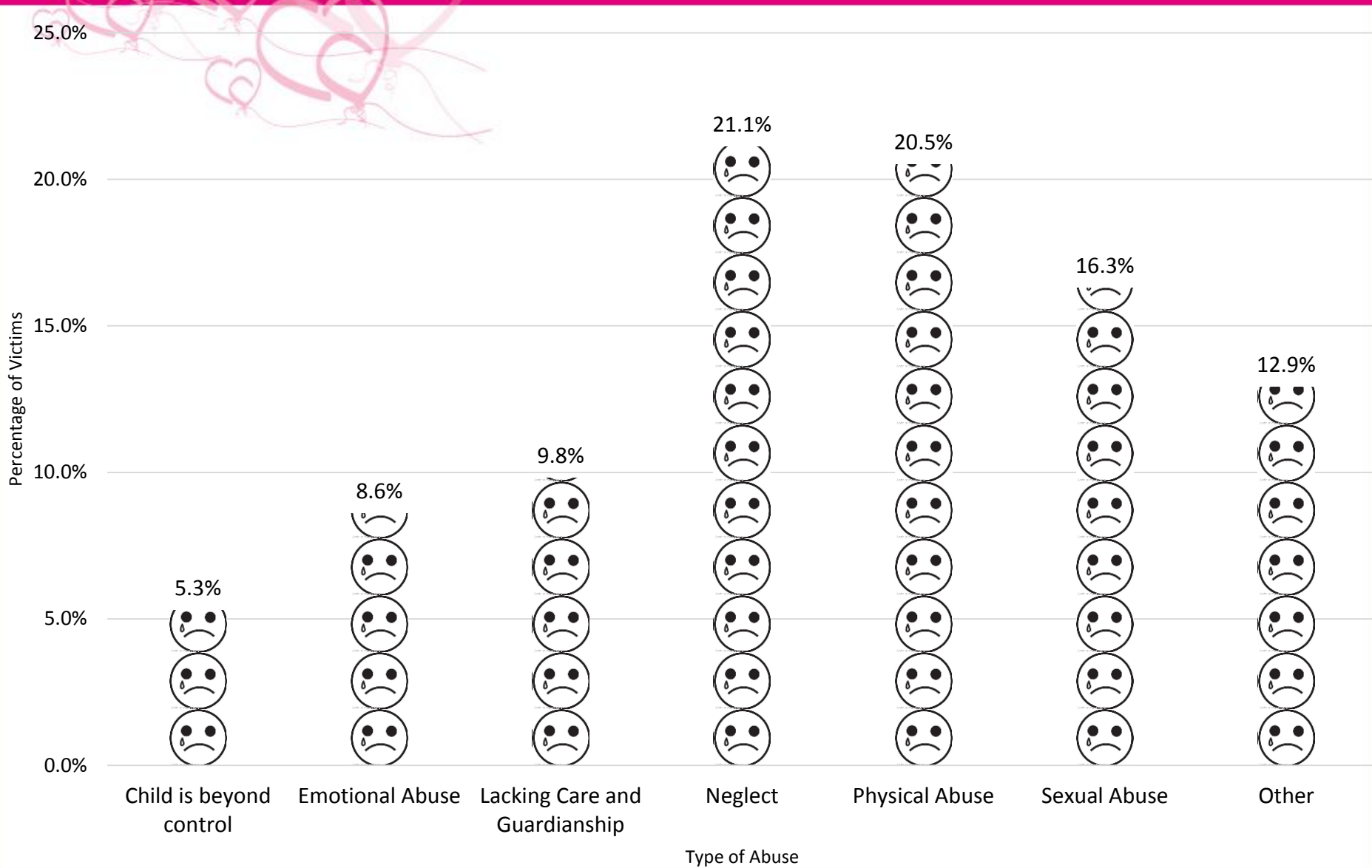
Age Groups of Victims



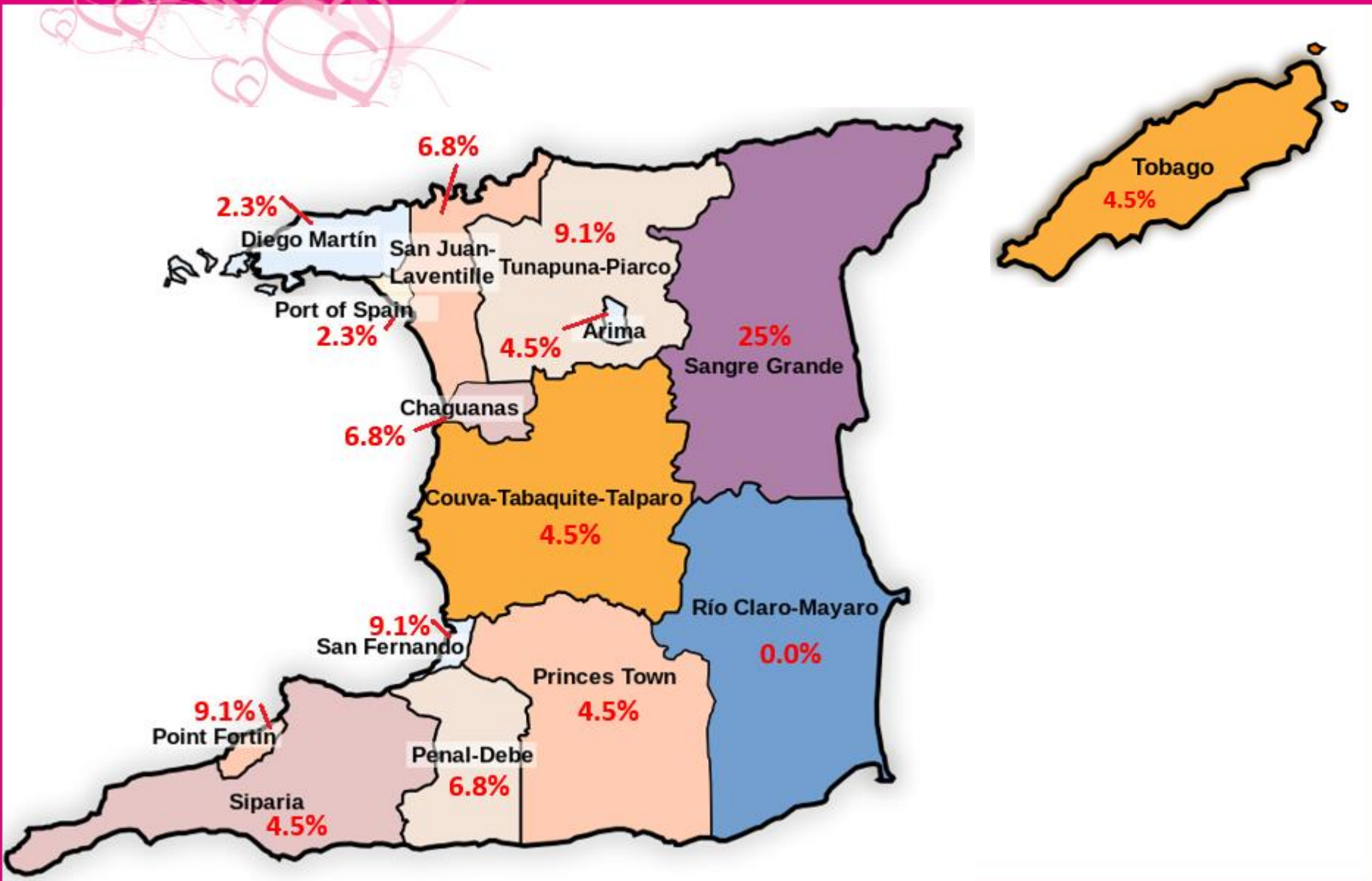
Where is Abuse Taking Place?



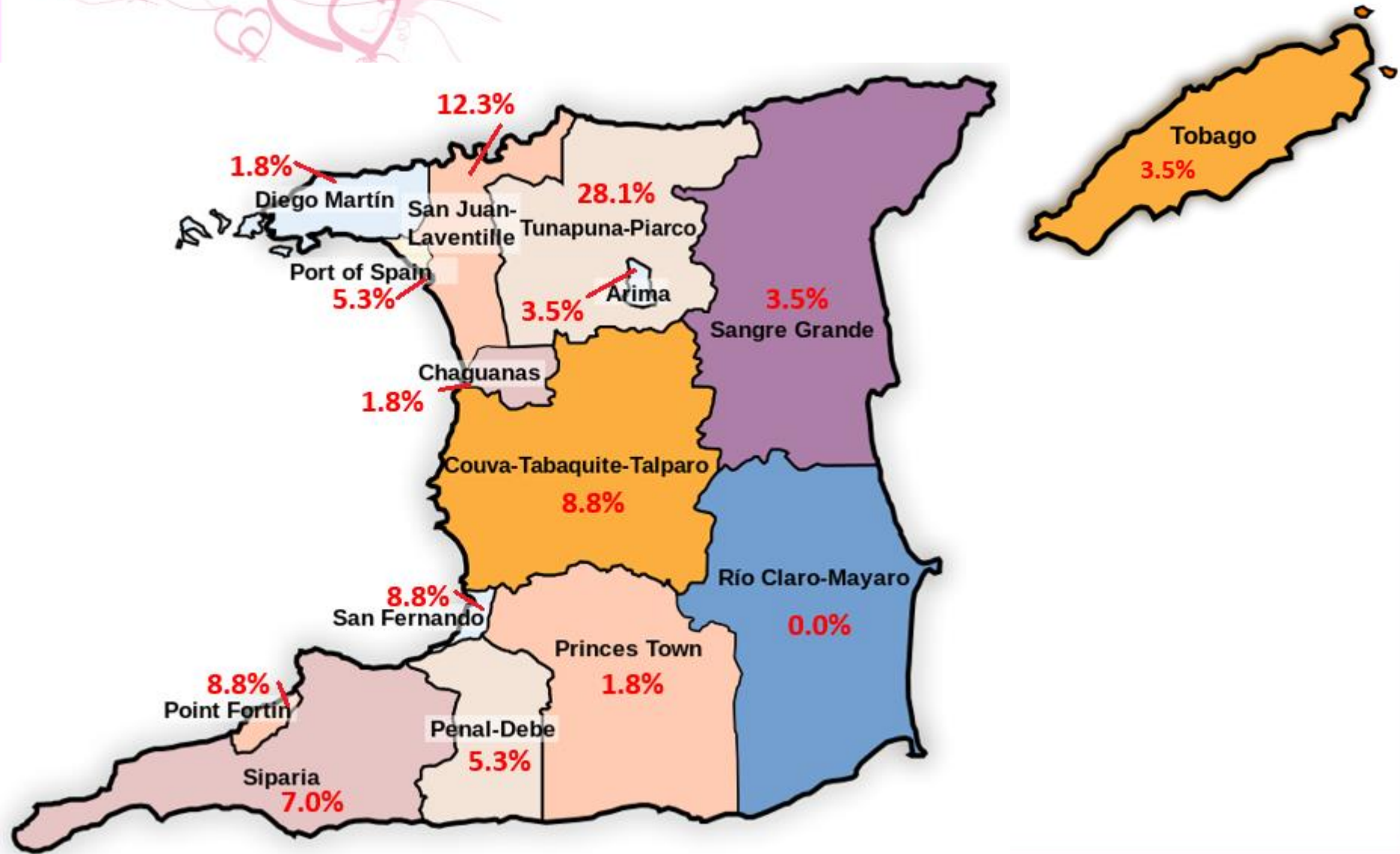
Type of Abuse Reported



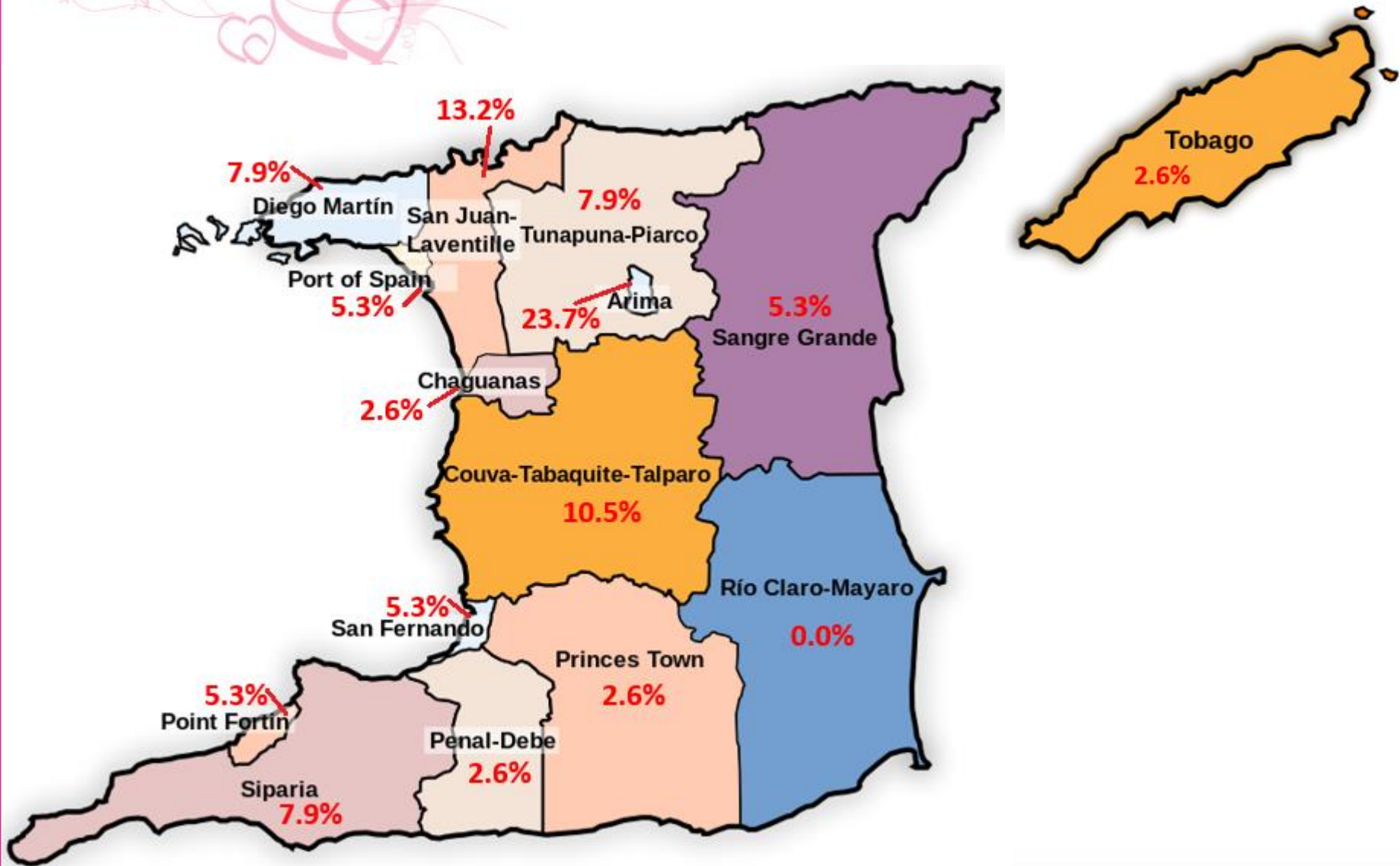
Reported Cases of Neglect



Reported Cases of Physical Abuse



Reported Cases of Sexual Abuse



Some Disturbing Trends

- **Mothers** are most commonly identified as person responsible for abuse
 - Mothers 46.9%
 - Fathers 21.2%
 - Stepfathers 10.6%
 - Others 14.6%
- In cases of neglect cases **mothers** were identified as the person responsible in 61% of the cases
- In cases of physical abuse **mothers** were identified as the person responsible in 41.1% of the cases

Some Good News

Emergency response gotten off to a good start

Children in imminent danger are being accommodated at our Place of Safety

Forensic interviews and medical exams have been conducted at the assessment centre

Fit persons have come forward to provide a home for children

Scores of citizens have expressed interest in providing a nurturing environment and loving home for our children



Thank You

